



REM Gallery is a 1,000 square foot contemporary art gallery located at 219 E Park Ave inside a majestic Victorian mansion built in 1890.

### **Gallery Characteristics**

The walls are flat white with off-white molding. Molding width around all doors, pocket doors, and windows is 5½ inches. Molding widths are not included in wall measurements in this blueprint. The ceiling is flat pale yellow. The floors are varnished hardwood throughout.

Since 219 E Park is a residence, there are many windows and doors in the gallery space. Windows are covered with white wooden blinds to control light.

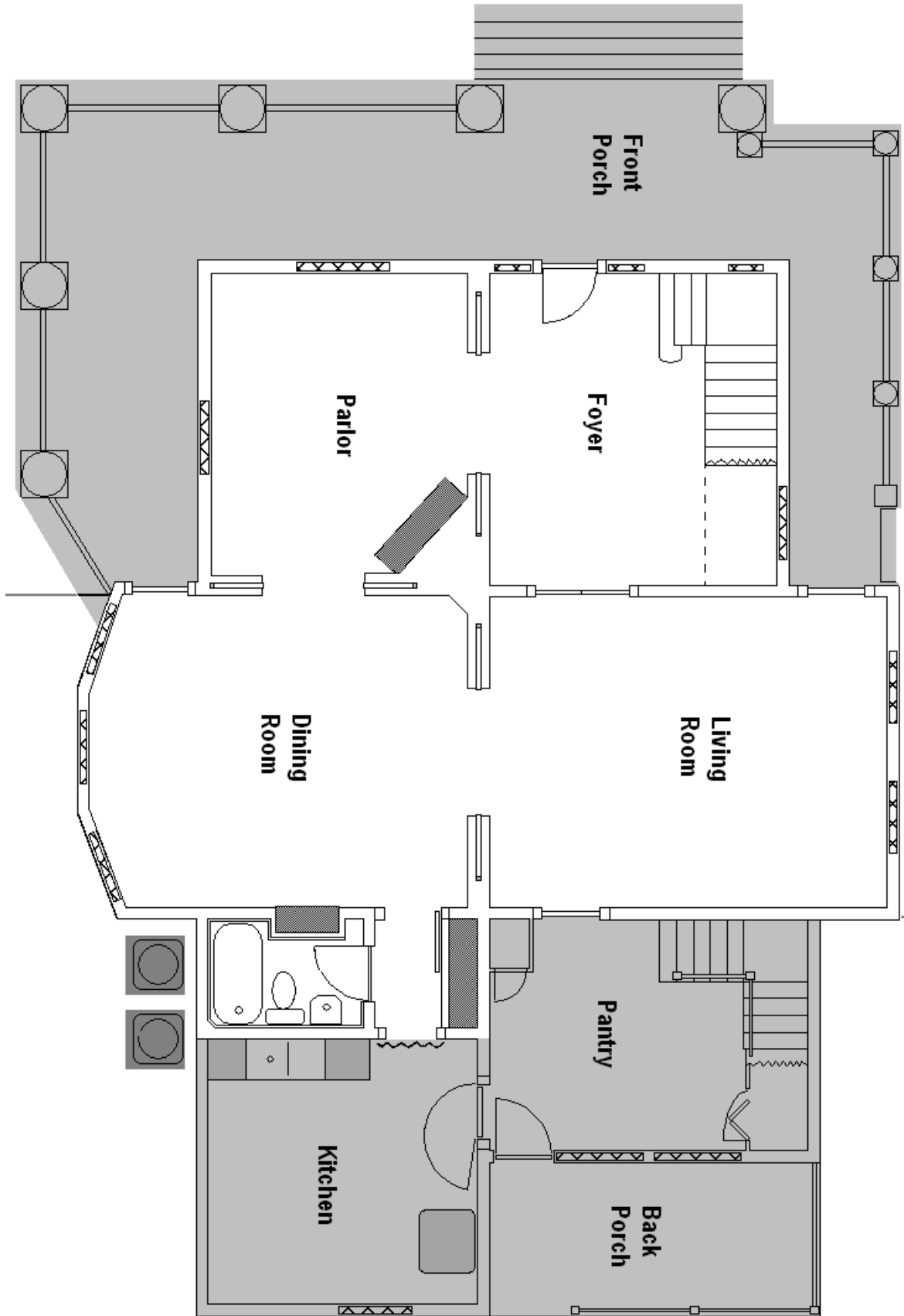
The gallery contains three fully functional 8' pocket doors. These remain open during exhibitions. The pocket doors between the foyer and the parlor are closed during off-hours for climate control.

Ceiling height is 10' 6" throughout the gallery.

REM Gallery chiefly lights art with 50W halogen spots. Occasionally, we will use 50W halogen floods to fill in dark areas on larger pieces. All lighting is on tracks with dimmers in each room.

Parking is street-only though the artist is reserved space in the driveway.

Please visit [www.remgallery.com](http://www.remgallery.com) for images of exhibitions and interiors.



Overview of 219 E Park Ave and REM Gallery (highlighted)

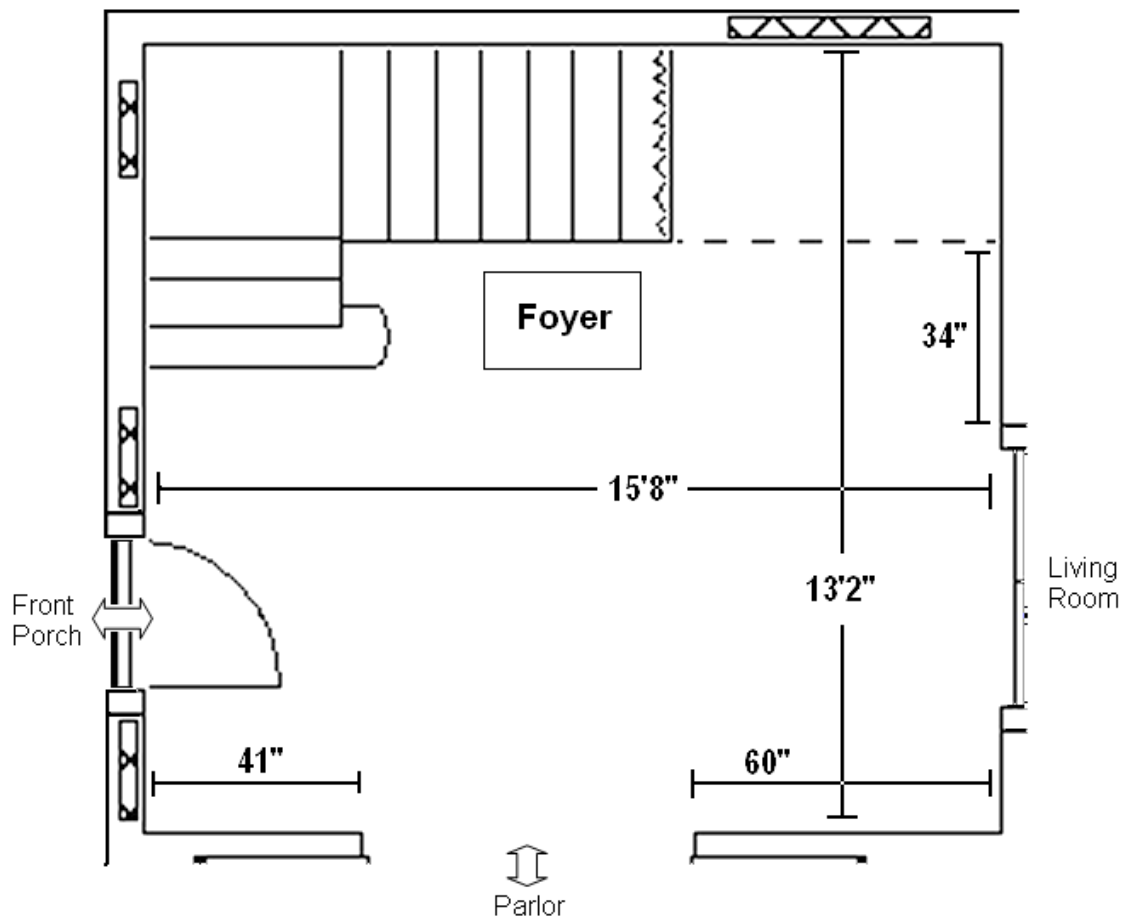
The foyer serves as REM Gallery's reception area and entrance.

Art is not typically hung in the foyer. Lighting in the foyer is soft; there are no track lights in the foyer.

The foyer contains some small furniture including a table for displaying postcards, a sing-in registrar, and a small desk for paperwork.

Currently, during exhibits the stairs to the second floor are roped off.

Upon entering the foyer, the guest will see into the living room through French doors on the opposite side of the room, giving them a glimpse of the exhibit.

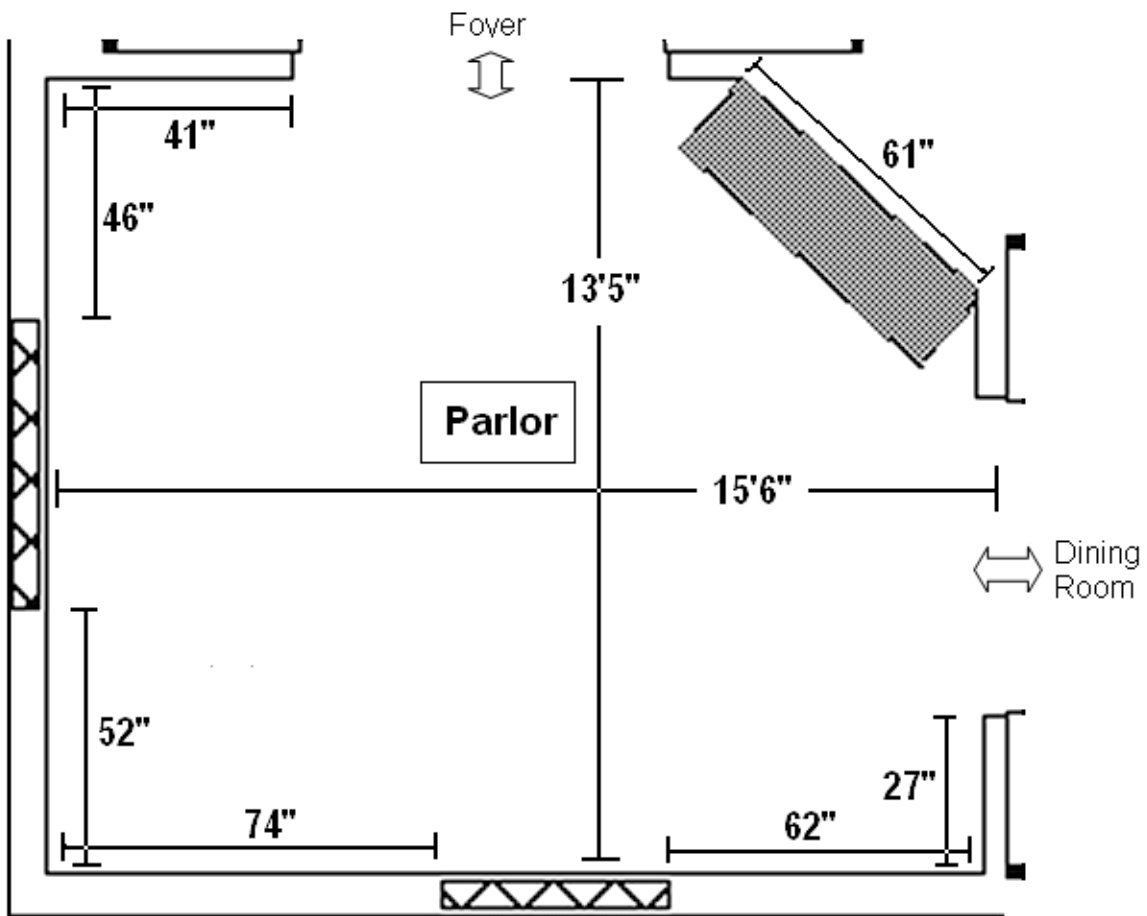


REM Gallery - Foyer (200 sqft)

The parlor is the smallest and most intimate of the gallery's three rooms.

The parlor joins the foyer and the dining room and is the first exhibition room guests enter.

In one corner, there is a functional gas fireplace (off during exhibits) with a long mantel ideal for placing small sculpture: height = 57½" (from the floor), width=60", depth=10".

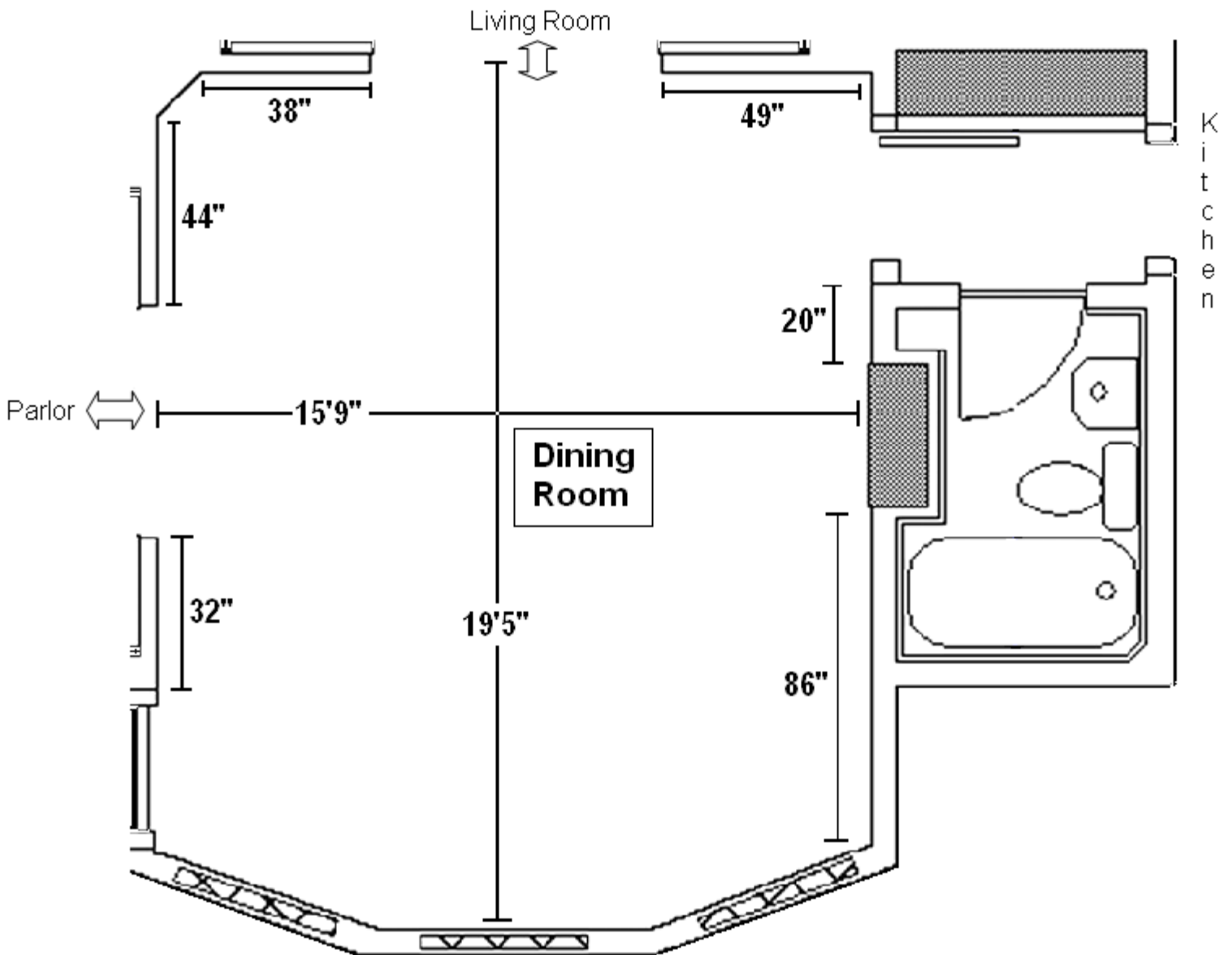


REM Gallery - Parlor (200 sqft)

Though large, the dining room lacks many continuous walls. Therefore, it is more naturally suited as a sitting room containing a couch and chairs. In addition, it is where the food is served during receptions.

The dining room joins the parlor with the living room and is the second room guests enter.

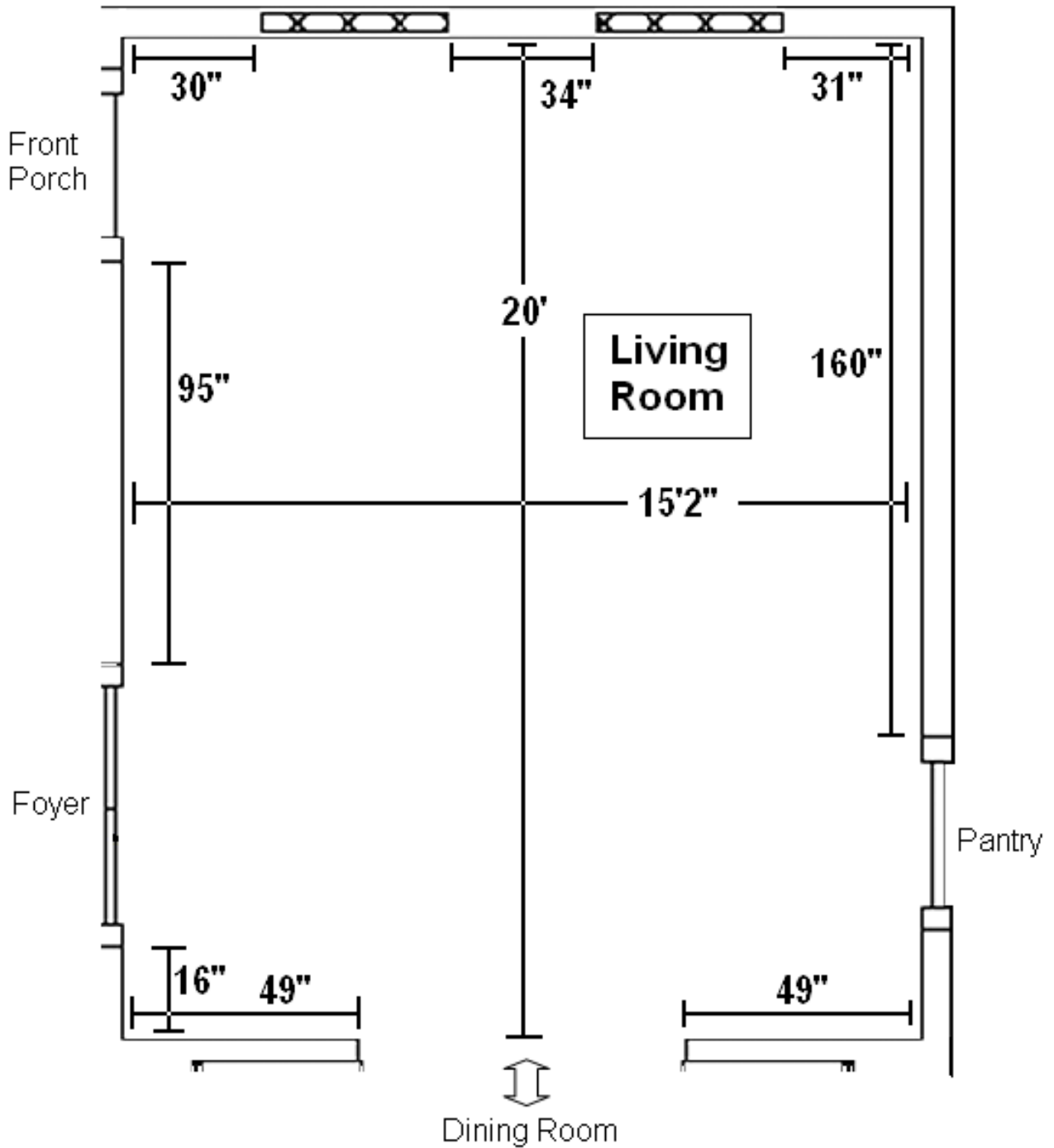
The restroom is accessible through a butler door (propped open during receptions); a soft wall discourages guests from entering the kitchen.



REM Gallery - Dining Room (300 sqft) and Restroom

The living room is the largest and most conventional space of the gallery's three rooms. It joins to the dining room. Note that the French doors to the foyer remain closed during receptions. The door to the pantry remains closed as well.

REM Gallery staff refers to this room as the Main Gallery.



REM Gallery - Living Room (300 sqft)